

PERIMETER

SURVEYING & MAPPING
Certificate of Authorization No. LB7264
Prepared by: Jeff S. Hodapp, P.S.M.
949A Clint Moore Road
Boca Raton, Florida 33487
Tel: (561) 241-9988
Fax: (561) 241-5182

LEGEND:

- SET P.R.M. (UNLESS OTHERWISE NOTED) 3" x 4" CONC. MON. WITH ALUMINUM DISK STAMPED P.R.M. • LB7264 P.C.P. CENTERLINE
-
- ⊕

ABBREVIATIONS:

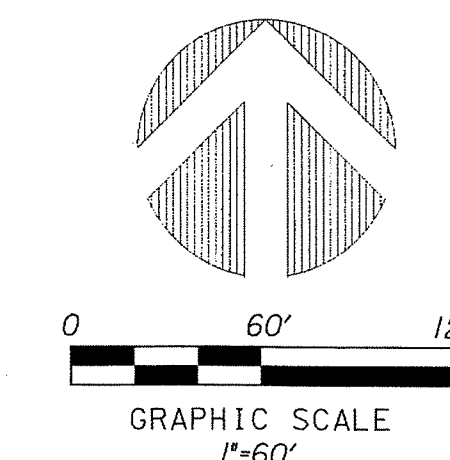
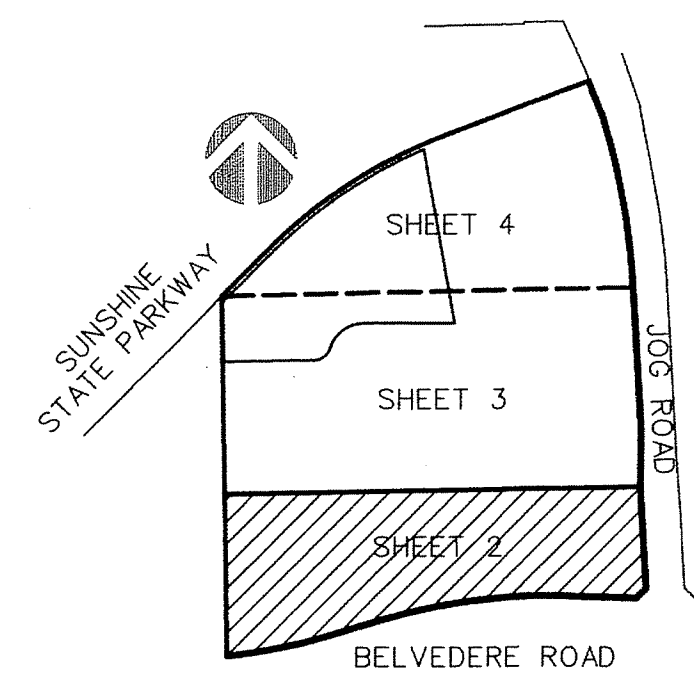
- CH CHORD
- CHB CHORD BEARING
- CONC. CONCRETE
- COR. CORNER
- D DELTA (CENTRAL ANGLE)
- D.E. DRAINAGE EASEMENT
- L ARC LENGTH
- L.B. LICENSED BUSINESS
- L.E. LANDSCAPE EASEMENT
- L.M.E. LAKE MAINTENANCE EASEMENT
- L.M.A.E. LAKE MAINTENANCE ACCESS EASEMENT
- L.S. LICENSED SURVEYOR
- L.W.D.D. LAKE WORTH DRAINAGE DISTRICT
- MON. MONUMENT
- O.R.B. OFFICIAL RECORDS BOOK
- N.R. NON-RADIAL
- P.B. PLAT BOOK
- P.B.C.R. PALM BEACH COUNTY RECORDS
- P.B.C.E.D. PALM BEACH COUNTY ENGINEERING DEPARTMENT
- P.B.C.U.E. PALM BEACH COUNTY UTILITY EASEMENT
- PG. PAGE
- P.C.P. PERMANENT CONTROL POINT
- P.O.B. POINT OF BEGINNING
- P.O.C. POINT OF COMMENCEMENT
- P.R.M. PERMANENT REFERENCE MONUMENT
- P.S.M. PROFESSIONAL SURVEYOR & MAPPER
- P.U.D. PLANNED UNIT DEVELOPMENT
- R RADIUS
- R/W RIGHT-OF-WAY
- SEC. SECTION
- S.F. SQUARE FEET
- U.E. UTILITY EASEMENT

TURNPIKE CROSSING EAST

A REPLAT OF ALL OF TRACTS 11 & 14, AND A PORTION OF TRACTS 7-9, 12, 13, 15, & 18-20,
ALL IN BLOCK 4, TOGETHER WITH A PORTION OF 30 FOOT RIGHTS-OF-WAY ADJACENT
THERETO, ALL OF "PALM BEACH FARMS COMPANY PLAT NO. 3" (P.B. 2, PGS. 45-54, P.B.C.R.),
IN SECTIONS 27 & 34, TOWNSHIP 43 SOUTH, RANGE 42 EAST,
PALM BEACH COUNTY, FLORIDA.

97

SHEET 2 OF 4



SEE SHEET NO. 3

MATCH LINE

